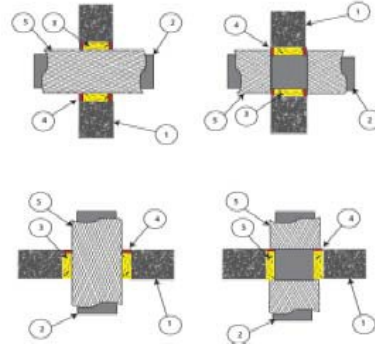
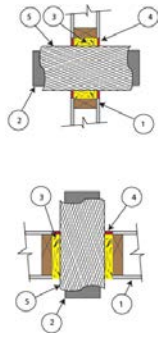


## CL4FIRE System Number: 405-1-4 for Grease Ductwork

### CL4FIRE Grease Duct 1 or 2-hour fire rated wall or floor penetrations:



### Gypsum/Wood Firestop Assemblies

### Concrete Firestop Assemblies

#### 1. Floor or Wall Assemblies:

Code conforming 1 or 2-hour floor or wall assembly. Minimum 4 ½" thick lightweight or normal weight concrete, 8" thick concrete block (filled or unfilled), 1 or 2 hour gypsum wall assembly with framed opening, 1 or 2 hour gypsum ceiling / wood floor assembly with framed opening.

#### 2. Penetrating Item:

Rectangular or Round #16 gauge or thicker steel grease duct (as described in Maximum Size of Grease Duct System)

#### 3. Wall Firestop Insulation:

Minimum 4" thickness of CL4FIRE fire protection thermal insulation, or mineral wool insulation tightly compressed into concrete opening, recessed ¼" from the top and flush with the bottom of a gypsum ceiling / wood floor assembly, or recessed ¼" from both sides of a concrete or framed gypsum wall assembly.

#### 4. Firestop Sealant:

Firestop Sealant installed a minimum of ¼" deep flush with the top surface of a floor assembly or both sides of a wall assembly. Installation can consist of one of the approved caulking products:

#### Approved Sealants:

- 3M Fire Barrier 1000 Silicone
- AD Fire Barrier Silicone
- Passive Fire Protection Partners 4800DW Sealant
- STi SIL300 Silicone Firestop Sealant
- STi SpecSeal® Series SSS Latex Intumescent Sealant
- STi SpecSeal® Series LCI Intumescent Sealant

Note: Equivalent sealants are acceptable, if they are tested and listed to CAN/ULC S115, ASTM E814-02 and UL 1479.

#### 5. Duct Insulation:

#### Gypsum/wood Assemblies:

Duct must be wrapped with CL4Fire insulation entirely through gypsum/wood floor or wall openings.

#### Concrete Assemblies:

Ducts may be wrapped with CL4FIRE insulation entirely through the concrete floor or wall openings before firestopping or abut to both sides of the firestopped floor or wall assembly.